

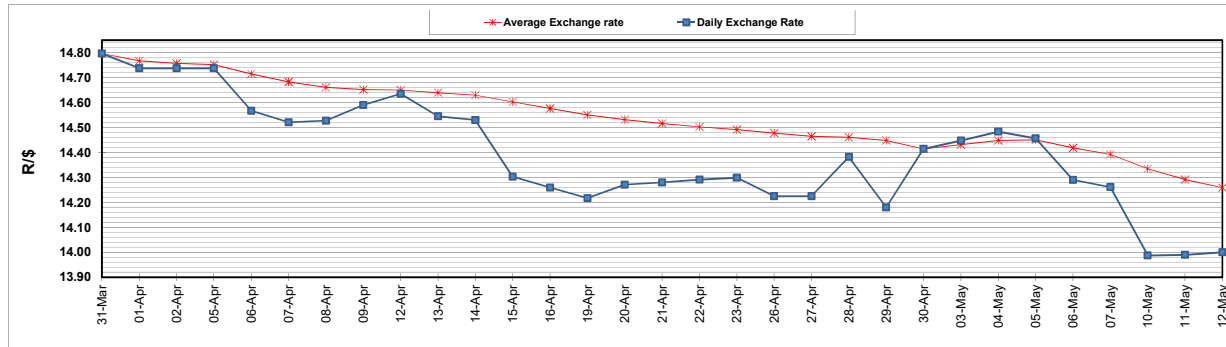
	PETROL 95 ULP	PETROL 93 ULP & LRP	DIESEL 0.05%	DIESEL 0.005%	ILL. PAR.
GAUTENG PUMP PRICE (SA c/l) AS FROM 05/05/2021	1,723.000	1,701.000	-	-	-
WHOLESALE PRICE (SA c/l) AS FROM 05/05/2021	-	-	1,446.620	1,450.020	857.488
SINGLE NATIONAL MAXIMUM RETAIL PRICE	-	-	-	-	1,076.000
BASIC FUEL PRICE - 12/05/2021 (SA c/l)	723.762	714.688	691.746	694.837	678.036
PRESS RELEASE CONTRIBUTION TO BFP 05/05/2021 - 12/05/2021 (SA c/l)	727.170	715.170	659.630	663.030	644.128
UNIT OVER/(UNDER) RECOVERY - 12/05/2021 (SA c/l)	3.408	0.482	(32.116)	(31.807)	(33.908)
AVERAGE BASIC FUEL PRICE 30/04/2021 - 12/05/2021	732.613	721.420	687.666	691.625	676.771
AVERAGE UNIT OVER/(UNDER) RECOVERY 30/04/2021 - 12/05/2021	(2.443)	(3.250)	(17.703)	(18.595)	(24.976)

ANALYSIS MOVEMENT OF AVERAGE OVER/(UNDER) RECOVERY

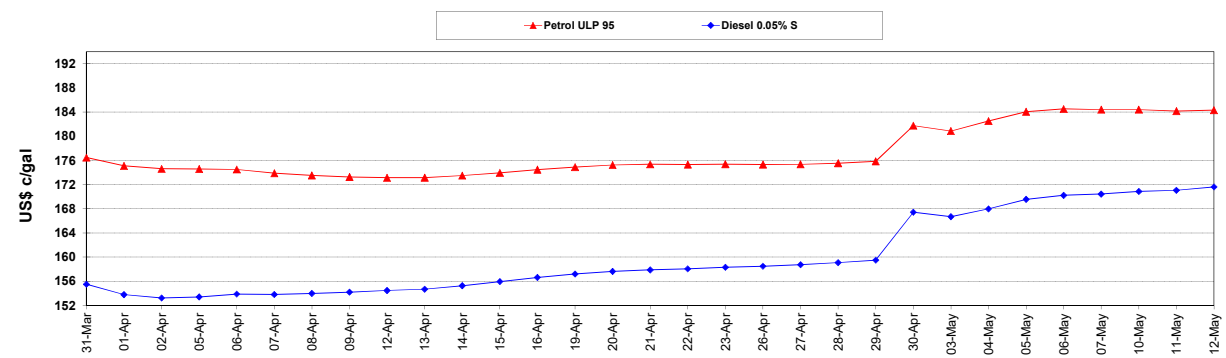
	PETROL 95	PETROL 93	DIESEL 0.05%	DIESEL 0.005%	ILL. PAR.
- MOVEMENT IN INTERNATIONAL PRODUCT PRICES	(12.154)	(12.812)	(26.818)	(27.762)	(33.946)
- MOVEMENT IN EXCHANGE RATE	9.711	9.562	9.115	9.167	8.970
AVERAGE UNIT OVER/(UNDER) RECOVERY 30/04/2021 - 12/05/2021	(2.443)	(3.250)	(17.703)	(18.595)	(24.976)

R/\$ EXCHANGE RATE - (R/\$14.0000- 12/05/2021)

EXCHANGE RATE USED IN BASIC FUEL PRICE



INTERNATIONAL PRODUCT PRICES OF BASKET USED IN BASIC FUEL PRICE



BASIC FUEL PRICE IN SA CENTS PER LITRE

